

# TuNya Mineral Resources



## KYEREBOSO GOLD PROJECT

Adansi North District  
Ghana

*TuNya derives from the  
Akan Language meaning to  
"unearth fortune"*

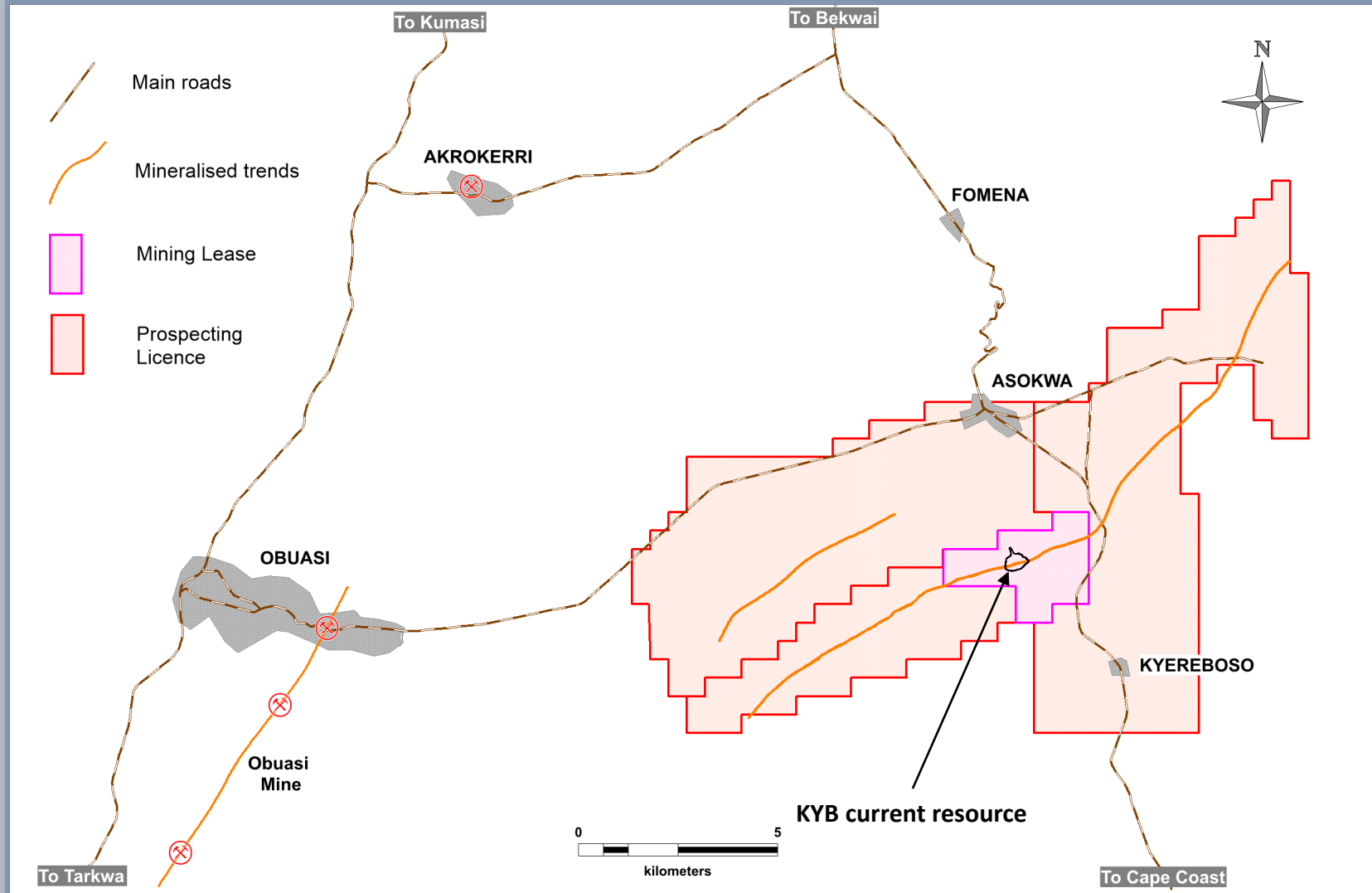


# Executive Summary

- **TuNya Mineral Resources** Private, Jersey registered company  
100% owned by Management
- **Kyereboso Mineral Resource** **0.45 Moz at 1.4 g/t Au within one open pit**  
Constrained only by drilling
- **Resource Growth** Multi-Moz potential  
Targeting 1 Moz Au in next round of drilling  
Ready to drill
- **Mining Lease** Granted in July 2022 for 13 years  
100% ownership
- **Landholding** 110 km<sup>2</sup> - Mining Lease (ML) plus three Prospecting Licences (PL's)
- **Exceptional discovery cost** US\$ 7 / Oz Au
- **Good geological understanding** Similar geology & mineralisation to Damang Gold Mine, Tarkwa
- **Experienced technical team** Ghana based with deposit discovery & mine building experience

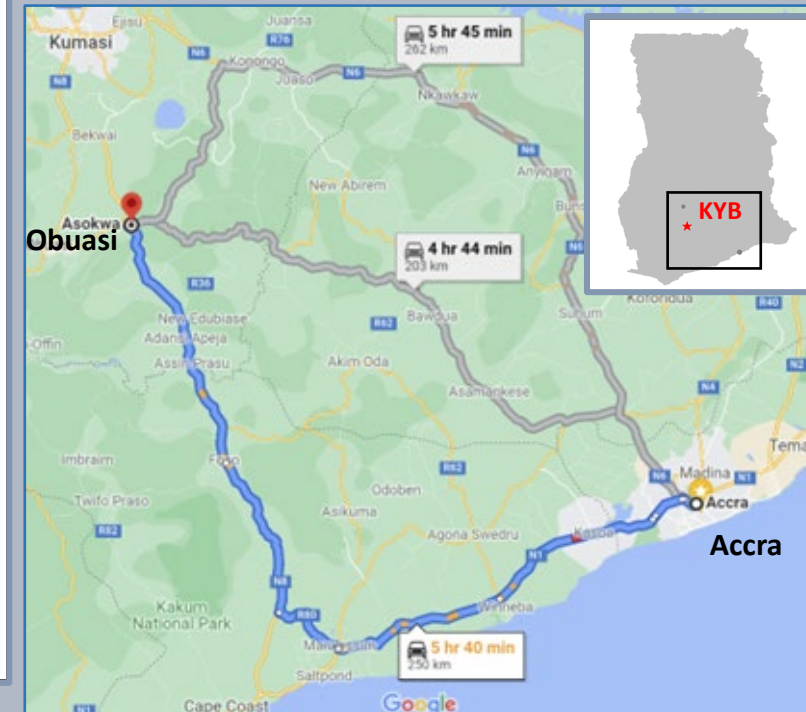
# A great address

Adansi North District, Ashanti Region  
15 km east of Obuasi Mine (AGA)



## Excellent infrastructure:

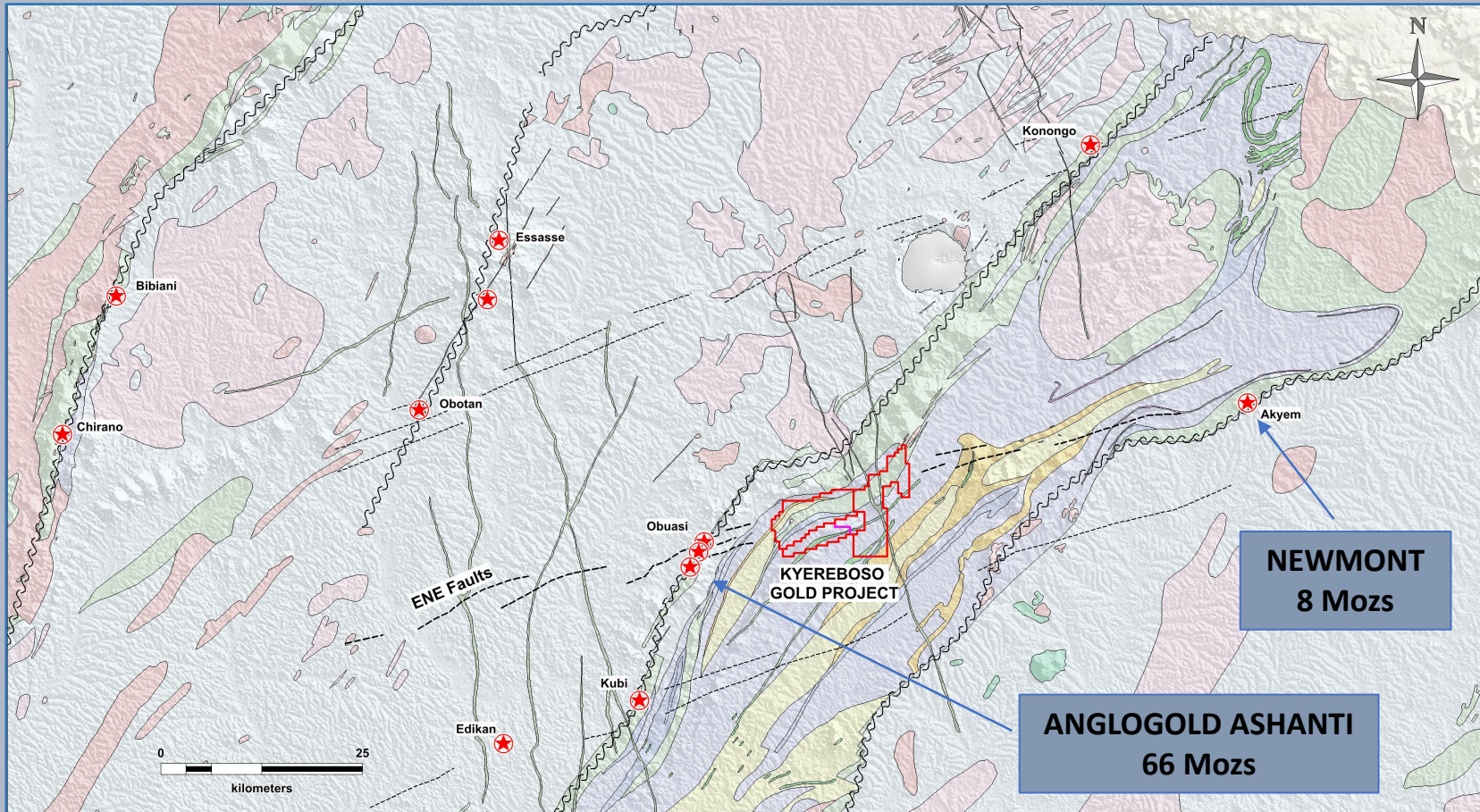
- Good road connections
- High tension power lines
- Local skilled labour
- Local mining contractors





# Ashanti Belt

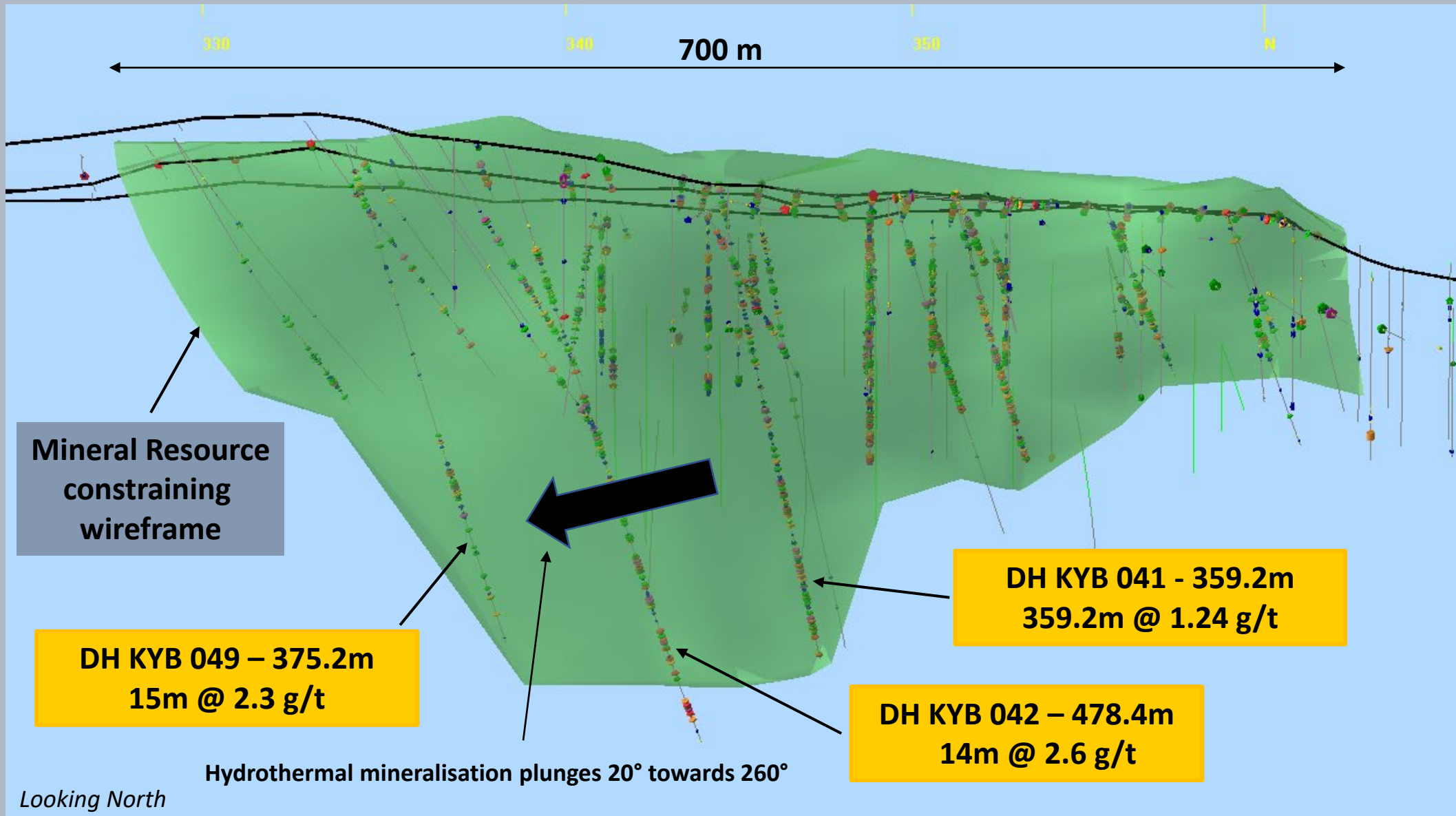
## A World Class Geological Setting



- The northern Ashanti Belt hosts world class gold mines
- The Obuasi district is **under-explored** compared to most of West Africa
- Kyereboso is located on prominent ENE faults
- Geology is well understood – good exposure
- Gold mineralisation in Tarkwaian conglomerates & hydrothermal veins

KYB Project lies on ENE trending structures between Obuasi & Akyem mines

# Kyereboso - Long Section



# Multi-Million Oz Potential - 1



## Kyereboso Trend

- 15 km strike length defined
- Damang style mineralisation
- Prominent ridge

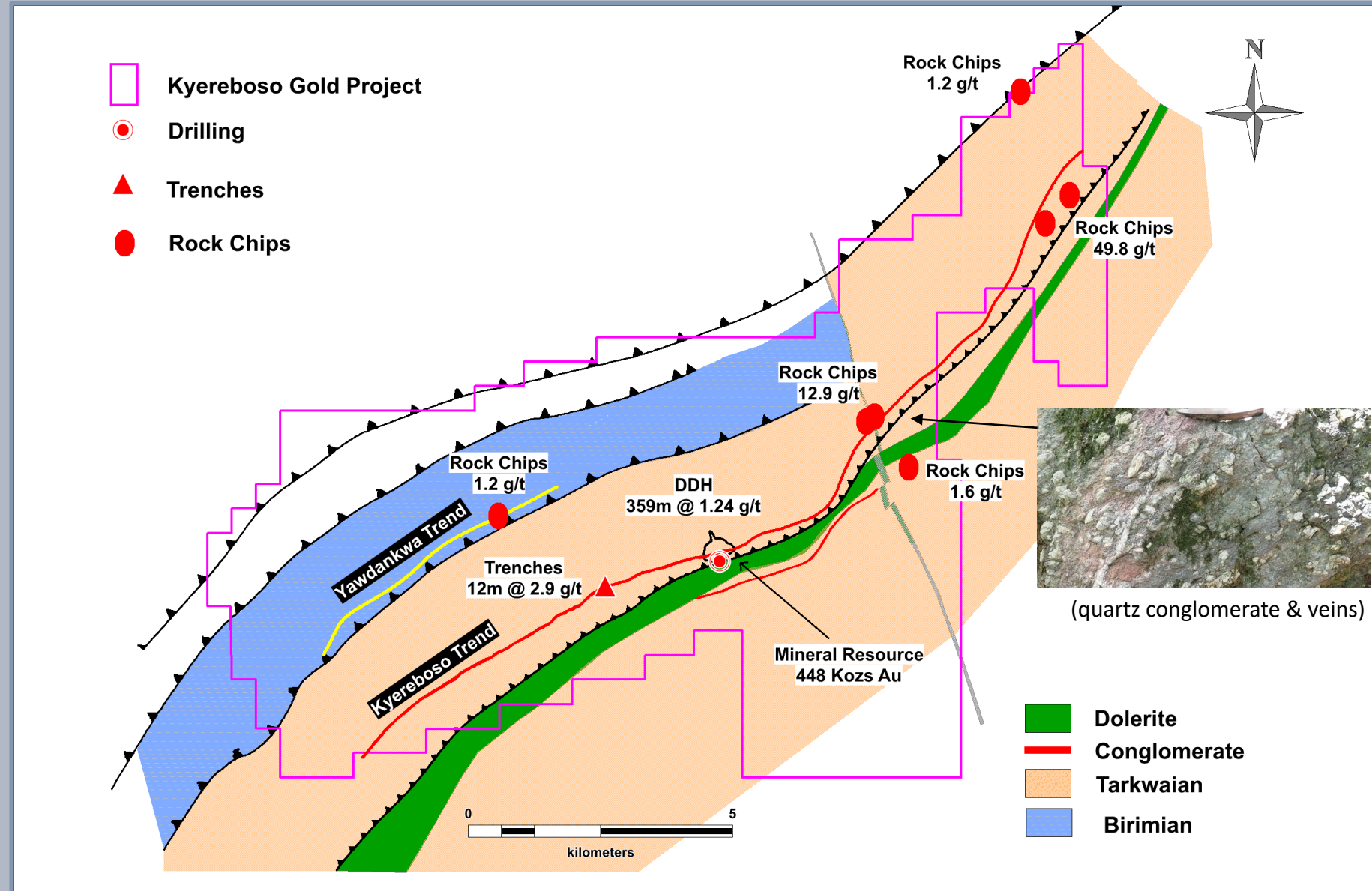
## Kyereboso Trend – South Ridge

- Damang style mineralisation
- Prominent ridge

## Yawdankwa Trend

- 5 km strike length defined
- Amoanda style mineralization
- Isolated hills

**Kyereboso mineralisation & structural model will guide targeting for new discoveries**



# Multi-Million Oz Potential - 2



Only 700m of the 15km long Kyereboso Trend has been drilled by TuNya

**Yawdankwa Trend**

- Soil anomaly
- Anomalous rock chips
- No trenches
- No drilling

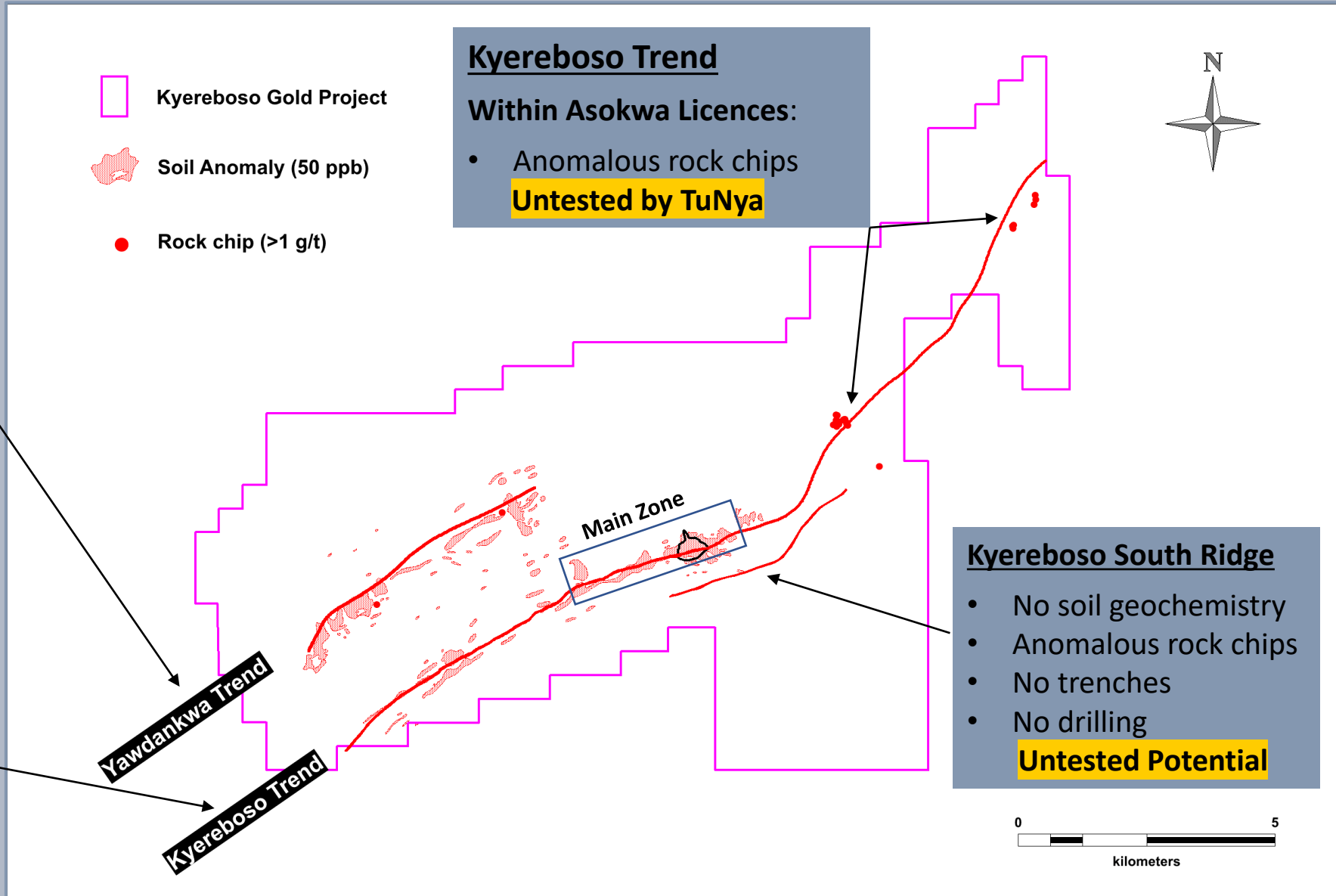
**Untested Potential**

**Kyereboso Trend**

Within Kyereboso Licences:

- Soil anomaly
- Trenches over 4km
- Drilling over 700m

**Potential for > 3Mozs Au**



# Multi-Million Oz Potential - 3



**SOUTH  
RIDGE**

**KYEREBOSO  
RIDGE**

**YAWDANKWA  
ANOMALY**

**BIRIMIAN  
CONTACT**



**KYEREBOSO GOLD PROJECT – LOOKING TOWARDS WEST**

# A focused work plan – 18 months



## Resource Zone

- 700 m strike
- 450,000 Ozs Au (one open pit)
- Defined by drilling
- Infill drill deeper intersections
- 2,000m HQ core

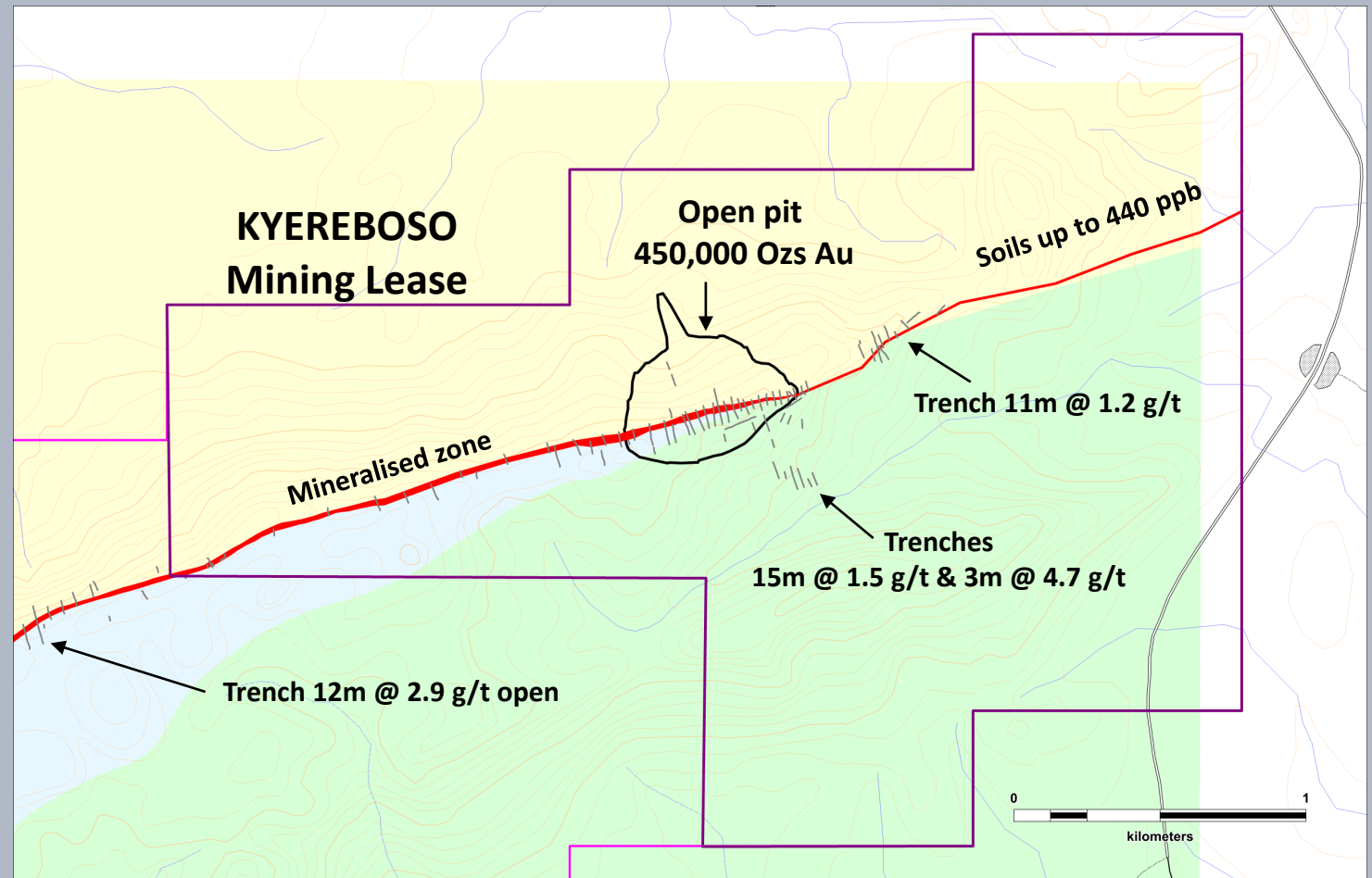
## Western Extension

- 1.5 km strike
- Defined by trenching
- Trenches on 50m spacing
- Drill on 100m sections
- 4,000m HQ core

## Eastern Extension

- 1.5 km strike
- Defined by soil geochemistry
- Trenches on 50m spacing
- Drill on 100m sections
- 4,000m HQ core

- Drill 15,000 metres of HQ diamond core
- To deliver a JORC compliant mineral resource of 1 Mozs Au



# Summary



**Ashanti Belt – world class setting that awaits a new generation of discovery**



**Kyereboso Mineral Resource**

**450,000 ounces Au in one, conical open pit - a building block for growth**



**Kyereboso Ore Reserve**

**Resource to Reserve conversion of > 70%  
Non-refractory metallurgy & simple processing circuit**



**Cost effective discovery**

**Expected >100% resource growth in 18 months**



**Drill targets are defined. Ready to Drill**



**Kyereboso/Damang mineralization style understood and underpins strategy for ground acquisition & target delineation**



**Joint Venture increases landholding to 110 km<sup>2</sup> and adds significant new targets**



**An experienced team, well positioned to grow TuNya while embracing an ESG culture – our license to operate \***



**Ghana-based management with a good understanding of regional, technical, cultural and political issues. Mining Lease approved in six months.**



# Experienced Management – Ghana based

Simon MEADOWS SMITH	Geologist	QP, twenty years managing a geological consultancy in West Africa
Joe AMANOR	Geologist	Previously Chief Geologist at Obuasi mine for AngloGold Ashanti
Adrian DEFREITAS	Mining Engineer	GM Obuasi mine, MD Endeavour Mining in Burkina Faso, GM Toro Gold in Senegal
Dr Ghislain TOURIGNY	Geologist	QP, twenty years of experience as geological consultant in West Africa
Mike BROOK	Corporate	Fund manager/geologist with investing experience in multiple African jurisdictions
Tony DJOKOTO	Legal	Legal Counsel for AngloGold Ashanti and Tullow Oil in Ghana
Efua MEADOWS SMITH	Community Relations	Experienced with community and government departments in Ghana
Joachim HABYARIMANA	Finance	Financial management of mining service companies in West Africa
Joseph YEBOAH	Government Relations	Representing local communities and stakeholders (AAMCOL)

Secretary:  CHILTERN GHANA

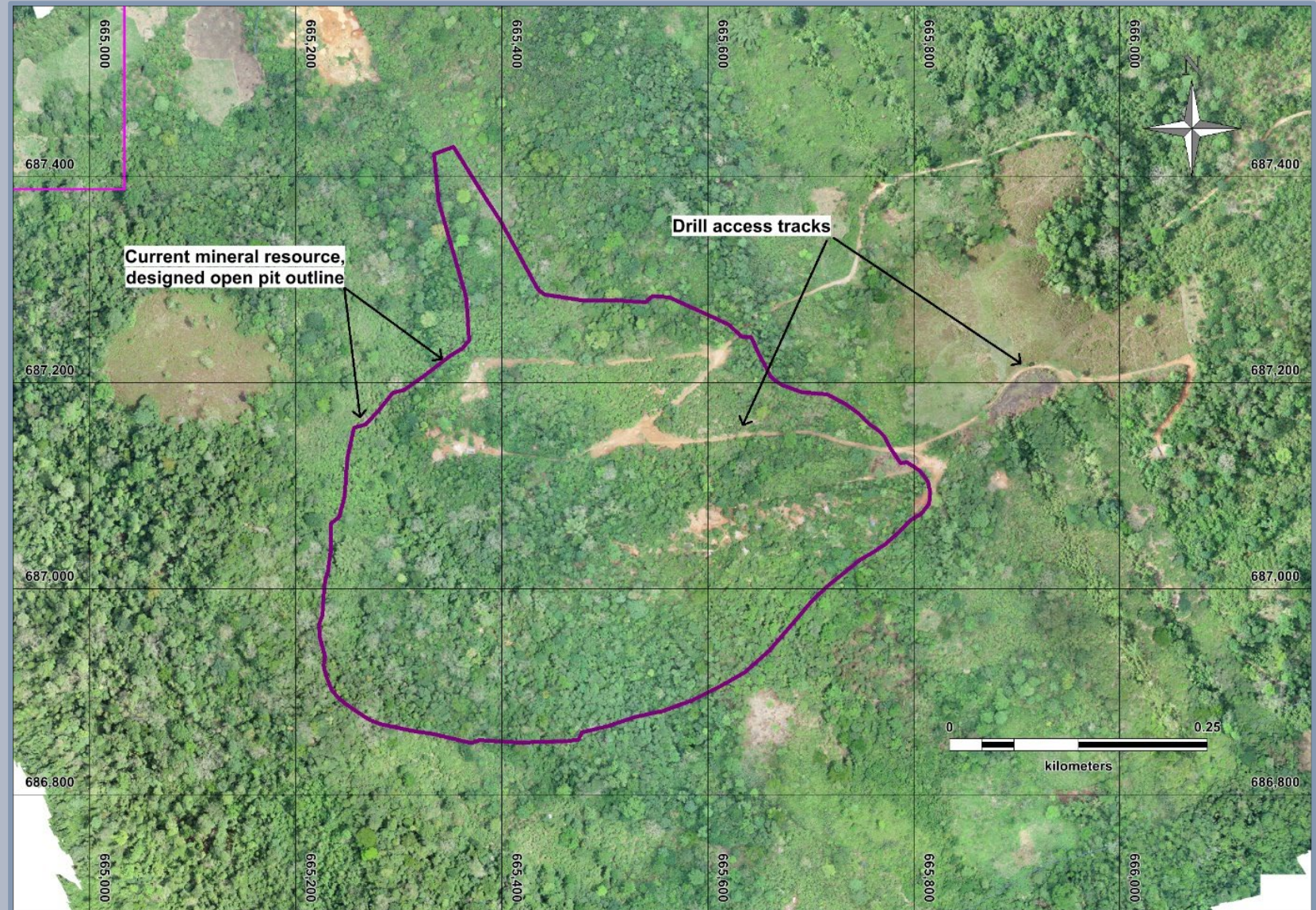
Lawyers:  EQUATOR LAW

Auditors:  mazars

# Open Pit footprint



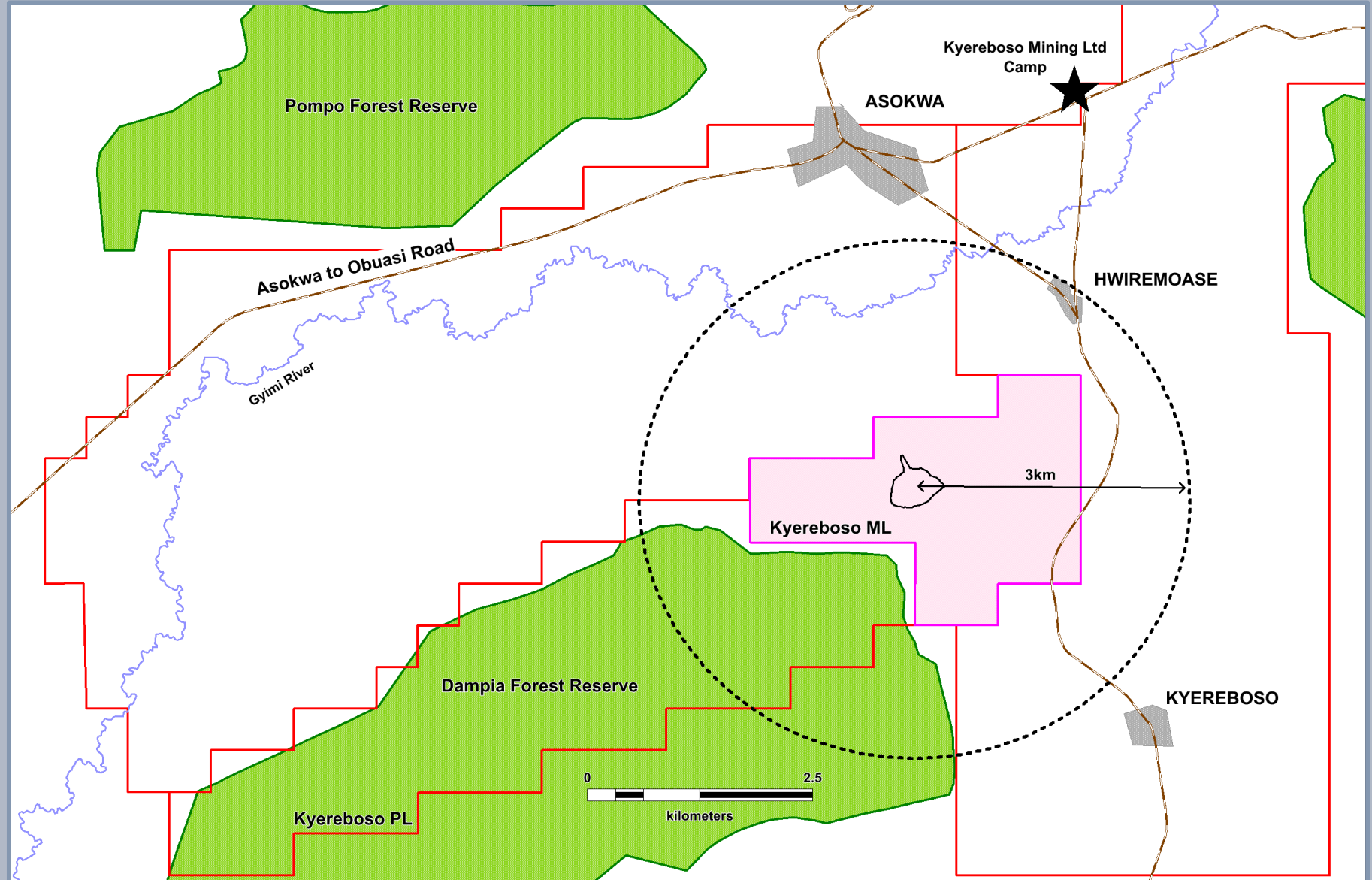
- ❖ No farming activities within current open pit outline
- ❖ Variably wooded and open grass / ferns along ridge top
- ❖ Cocoa farming on lower flanks of Kyereboso ridge
- ❖ Access to mineral resource zone and mineralised trend (along ridge top) is limited to one access track created by Kyereboso Mining Ltd



# Social Setting



- ❖ No communities within the Kyereboso Mining Lease
- ❖ Dampia Forest Reserve covers most of Kyereboso Prospecting Licence
- ❖ LI 2462 passed by parliament 2022.
- ❖ Forest Entry Permit granted – pending renewal
- ❖ Minor artisanal mining activity along mineralised trend: shallow excavations of quartz veins
- ❖ Good relationship with traditional leaders of Kyereboso village and Asokwa town



# Kyereboso Main Zone



Designed open pit based on current resource

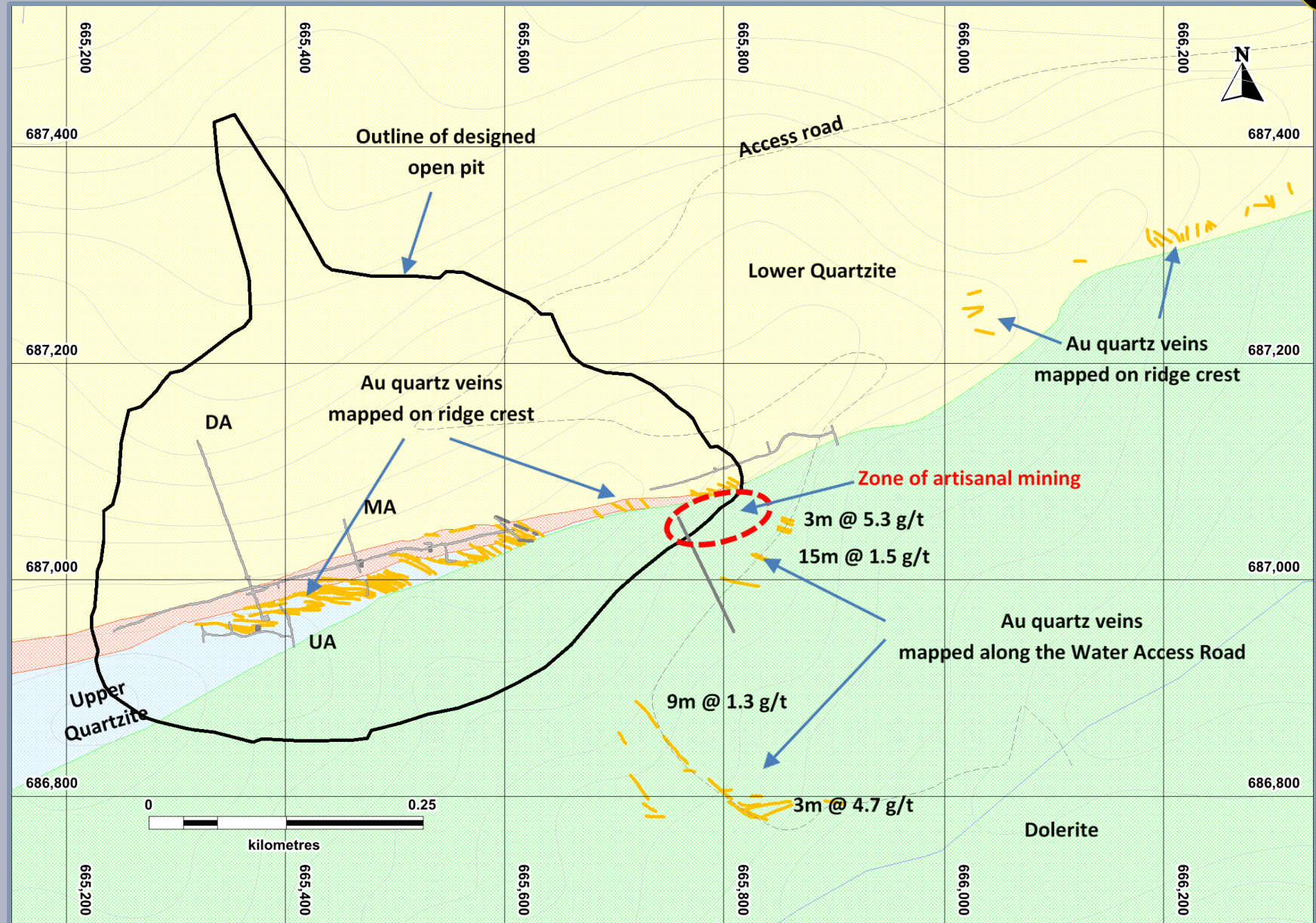
Drilling confined to 700m long zone within open pit

Exploration adits (1904) Have been mapped and provide good geological data

Mapped quartz veins at surface in conglomerates, quartzites & dolerite

Mineralised zones mapped in dolerite >200m south of resource

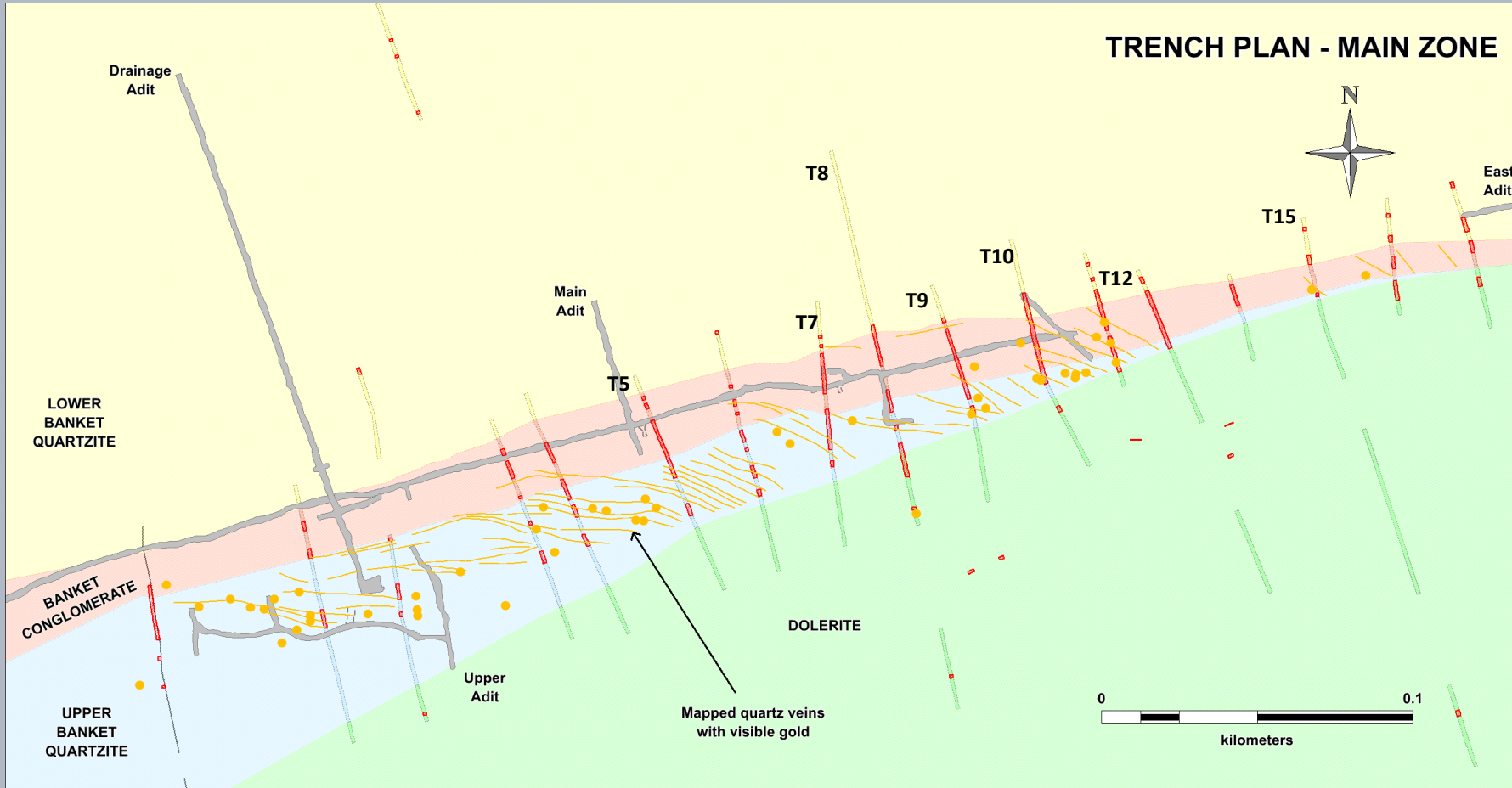
Drill targets along strike & within dolerite 'footwall'



# Consistent Trenching Results



Plan View  
Trenches within mineral resource



## Trench Intersections

- T05: 22.0m @ 2.5 g/t
- T07: 14.4m @ 6.1 g/t
- T08: 25.5m @ 2.9 g/t
- T09: 26.0m @ 2.9 g/t
- T10: 21.0m @ 3.6 g/t
- T12: 21.0m @ 3.2 g/t
- T15: 7.0m @ 9.0 g/t

Mapped geology with visible gold occurrences & adit outlines

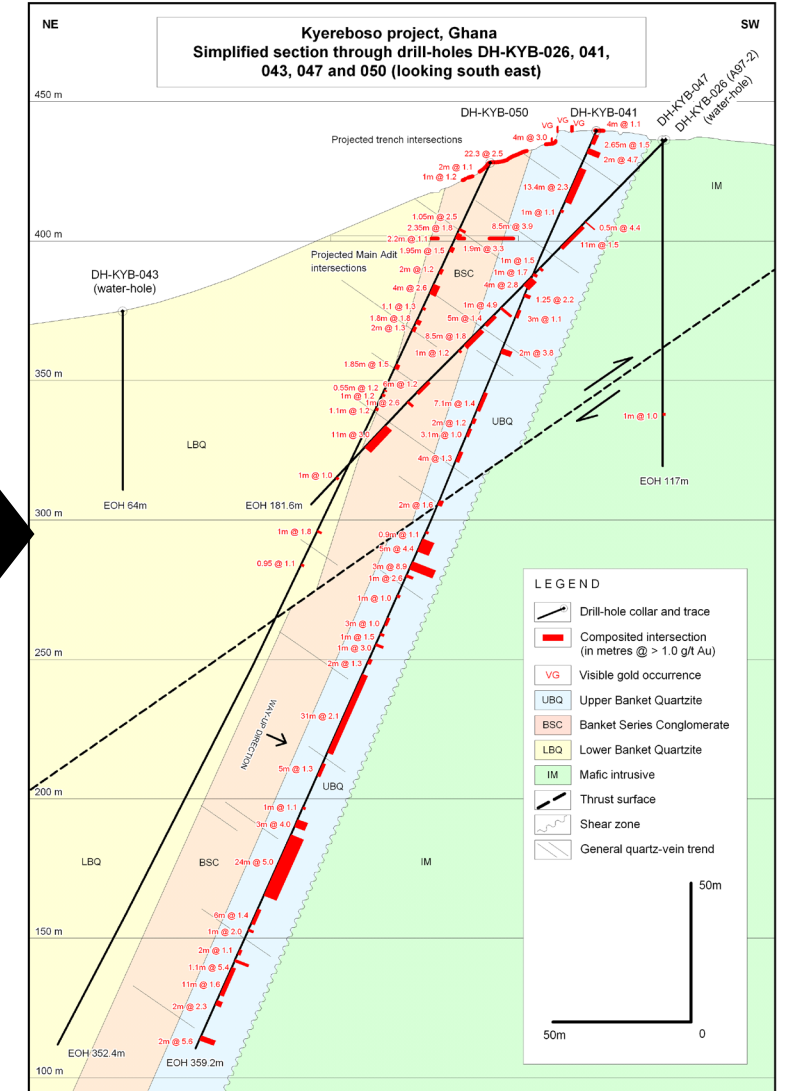
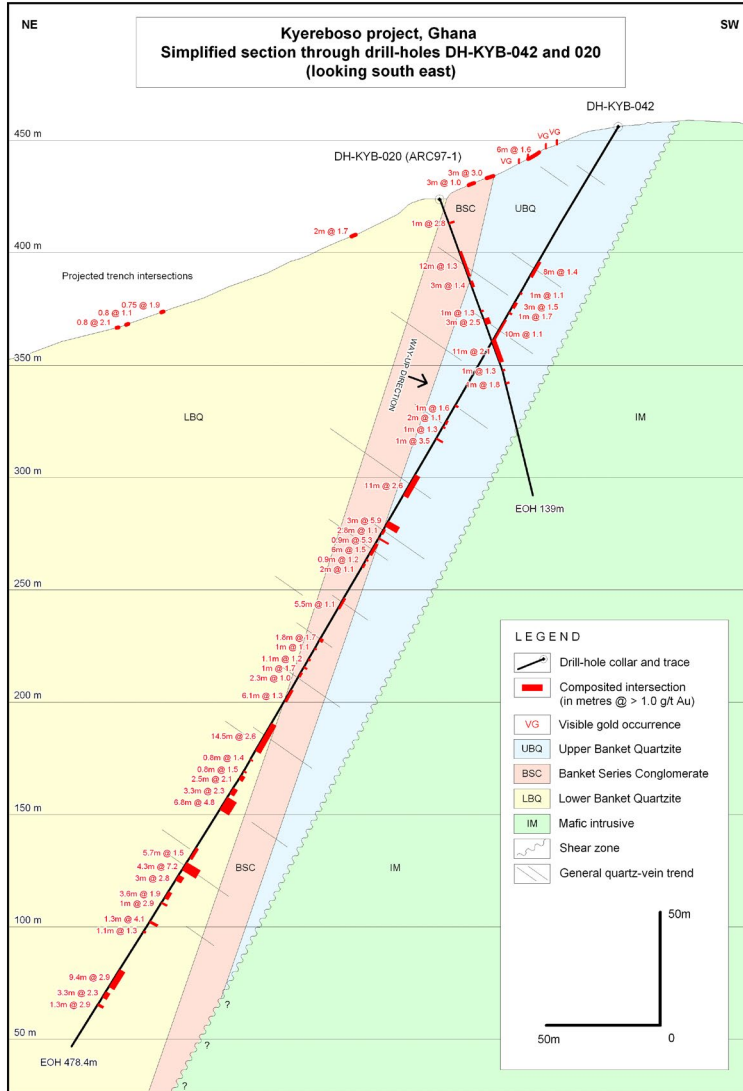
# Drill Sections



## DH\_KYB\_041

359.2m @ 1.24 g/t from surface

Drill hole	Width (m)	Au g/t
DH_KYB_001	7	4.1
DH_KYB_007	12	2.6
DH_KYB_011	14	3.3
DH_KYB_012	10	4.0
DH_KYB_012	19	1.8
DH_KYB_016	9	4.0
DH_KYB_026	11	3.0
DH_KYB_035	16	2.3
DH_KYB_036	10	3.2
DH_KYB_041	13	2.3
DH_KYB_041	31	2.1
DH_KYB_041	24	5.0
DH_KYB_042	13	2.6
DH_KYB_042	14	2.6
DH_KYB_042	4	7.2
DH_KYB_048	16	2.4
DH_KYB_049	15	2.3
DH_KYB_062	66	1.8
DH_KYB_065	18	2.8
DH_KYB_074	9	4.9
DH_KYB_074	5	5.7



# Drill Core



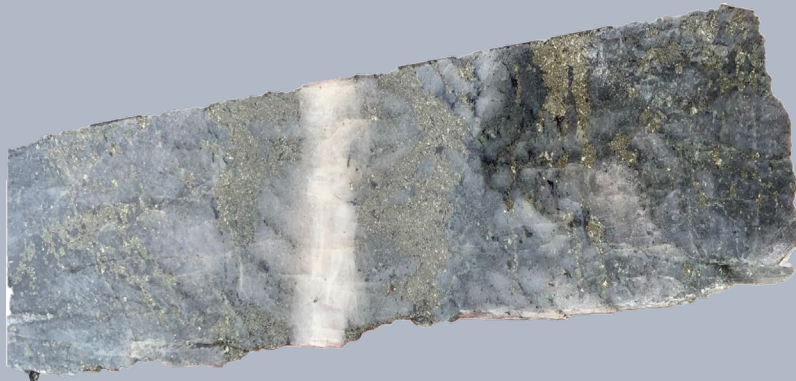
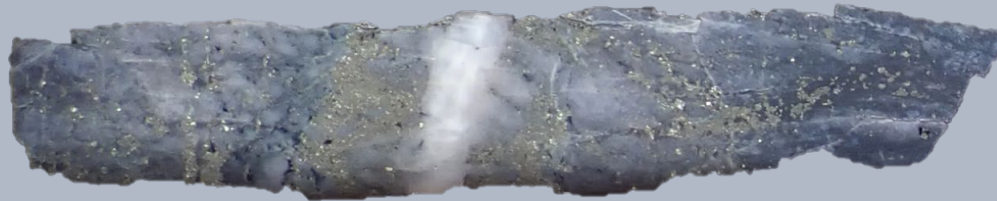
KYBDD041 – 275m



KYBDD042 – 165m



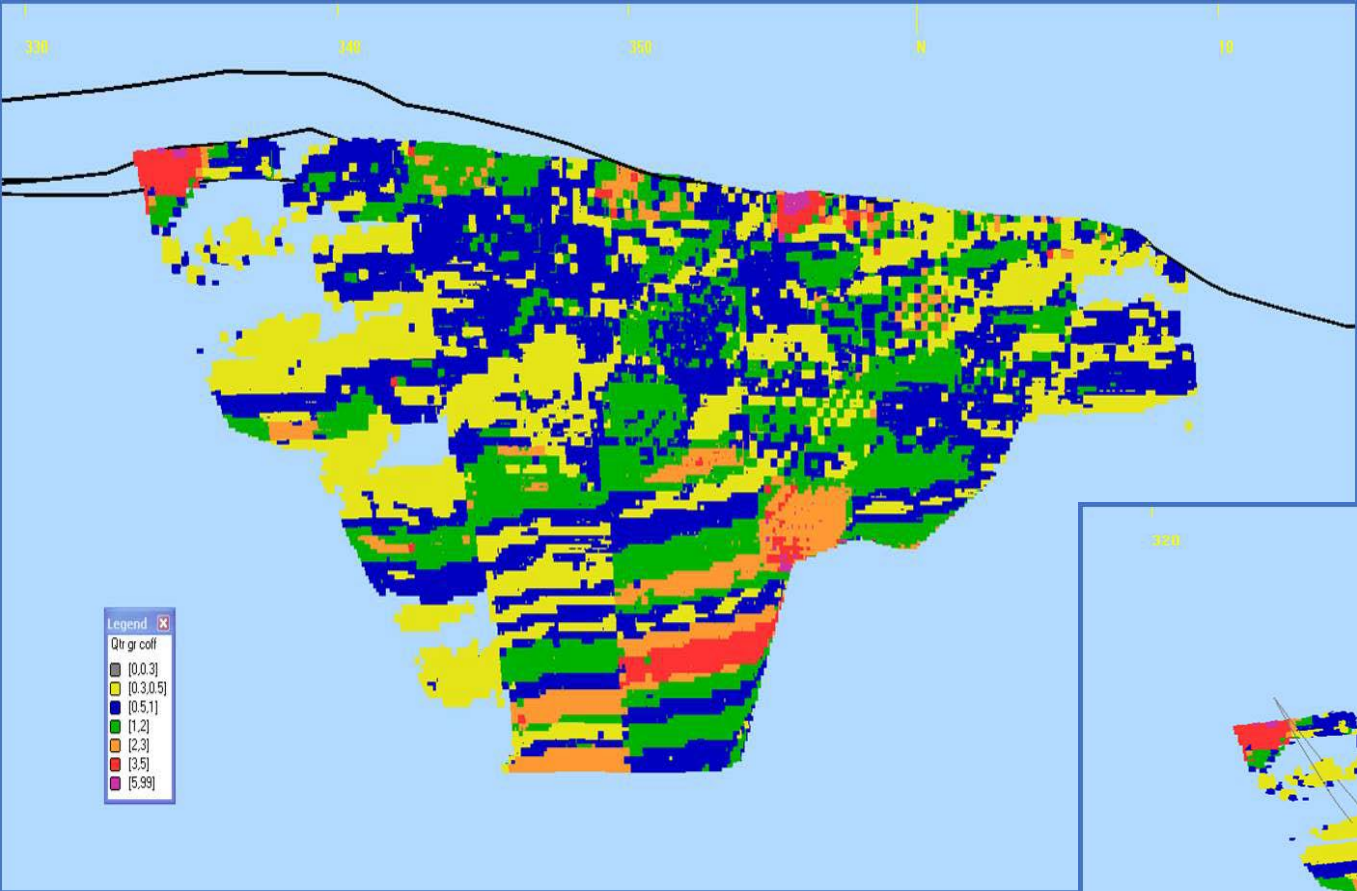
**Mineralised quartz veins & fractures with disseminated pyrite are perpendicular to drill core axis**



**Drill core from hole KYB-049 at a depths 240 - 250m**

**Metallurgical sample 502**

# Kyereboso Block Model & Open Pit



Mineral resource block model  
Designed pit (\$1,400 Au price)  
Drill hole traces  
Looking north

Mineral Resource block model  
Long Section  
Looking north

